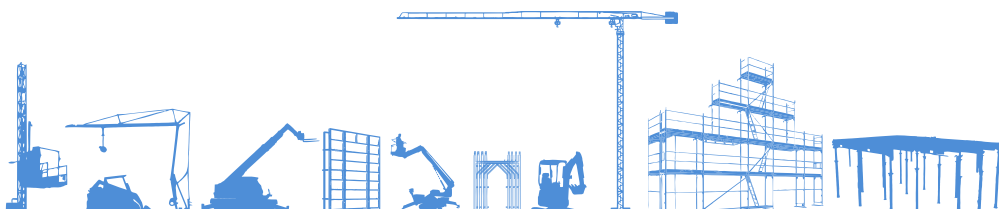


SCHEDA TECNICA



NOLEGGIO
www.gruppoemac.it



INSIEME PER DARVI IL MEGLIO

Non chiedere una macchina,
scegli un servizio che ti dia valore.

www.gruppoemac.it

SELF-ERECTING CRANE

**Specifications:**

- ▶ Max jib length: 24,00 m
- ▶ Capacity at max length: 0,60 t
- ▶ Max capacity: 1,50 t

WORKS FOR YOU.™

Transportation · Transport · Transportation · Transportation · Trasporto	3
Load Diagram · Lastkurven · Courbes de charges · Curvas de cargas · Diagramma di portata	4
Mechanism · Antriebe · Mécanismes · Mecanismos · Meccanismi	5

KEY

Zeichenerklärung · Légende · Leyenda · Legenda



Hoisting · Heben · Levage · Elevación · Sollevamento



Trolleying · Katzfahren · Distribution · Distribución · Traslazione carrello



Slewing · Schwenken · Orientation · Orientació · Rotazione

H

Max. under hook height · Höchste Hakenhöhe · Hauteur maxi. sous crochet · Maxima altura bajo gancho · Altezza max. sotto gancio

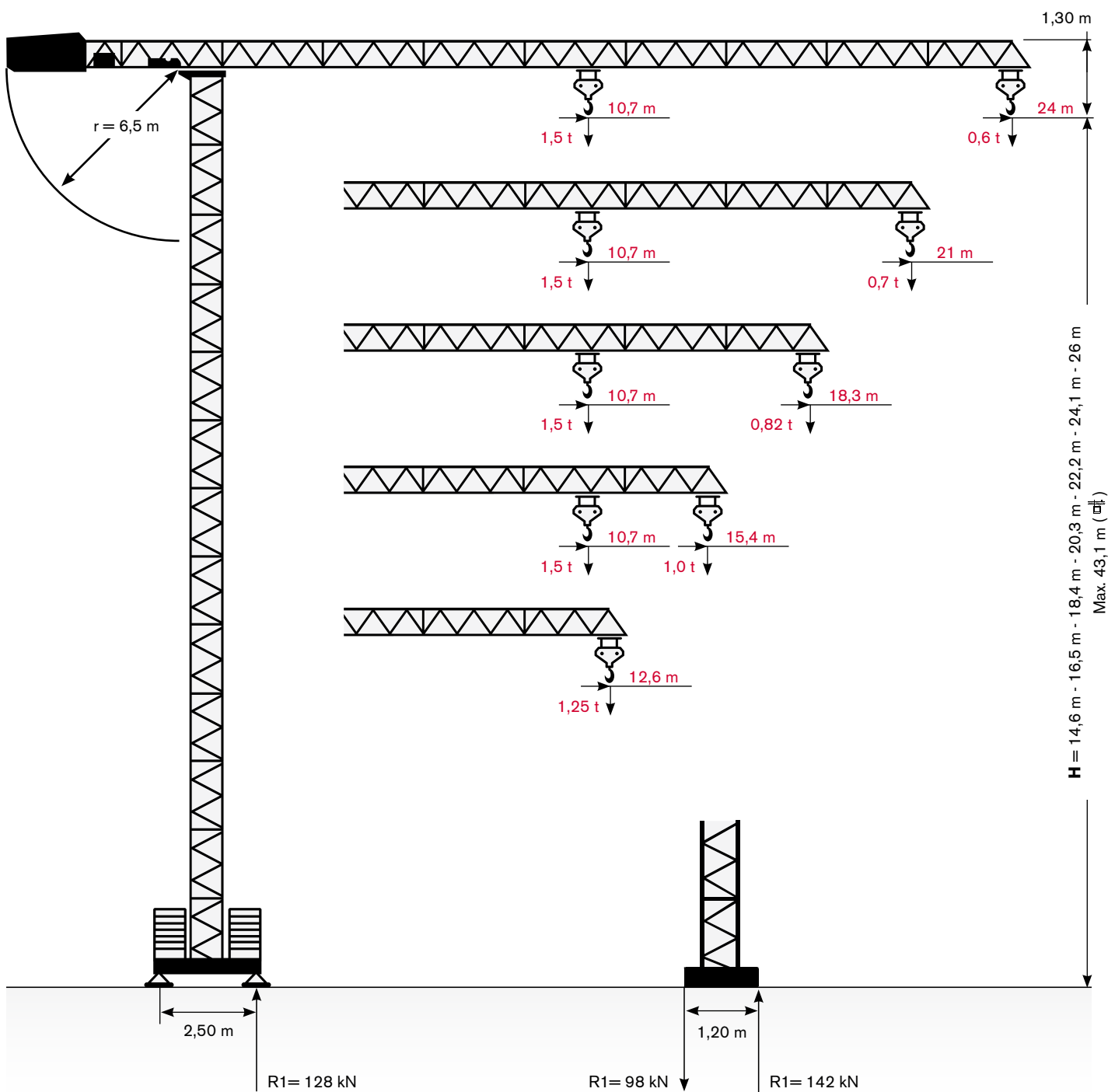


Jib · Ausleger · Flèche · Pluma · Braccio

LOAD DIAGRAM

FC 6.24H

Lastkurven · Courbes de charges · Curvas de cargas · Diagramma di portata






	10,70 m	12,60 m	14,10 m	15,40 m	16,80 m	18,30 m	21,10 m	24 m
1,5 t →	1,50	1,25	1,10	1,00	0,90	0,82	0,70	0,60

Jib length · Ausleger · Longueur de flèche · Largo de pluma · Lunghezza braccio (m)	Counterweight · Gegengewicht · Contrepoids · Contrapeso · Contrappeso (t)	H max (m)	Base Ballast · Grundballast · Last de Base · Lastre Base · Zavorra Base (t)
24,00	2,80	14,60	11,36
21,10	2,40	16,50 - 18,40	12,78
18,30	2,10	20,30 - 22,20	14,20
15,40	1,80	24,10	15,62
12,60	1,55	26,00	17,04

MECHANISMS

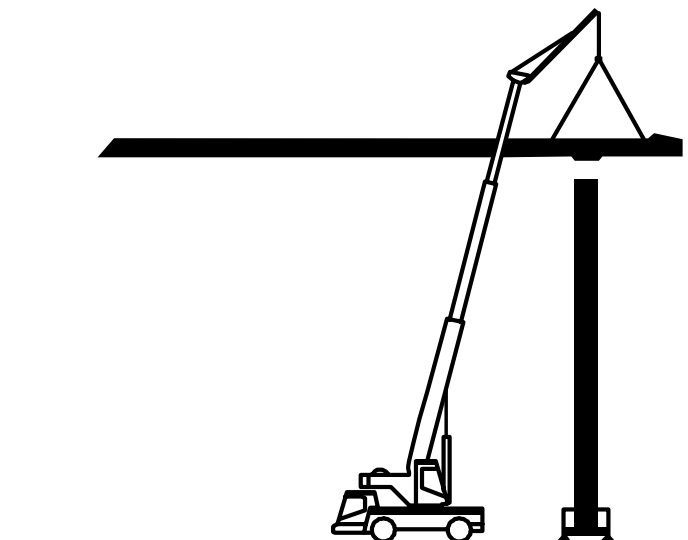
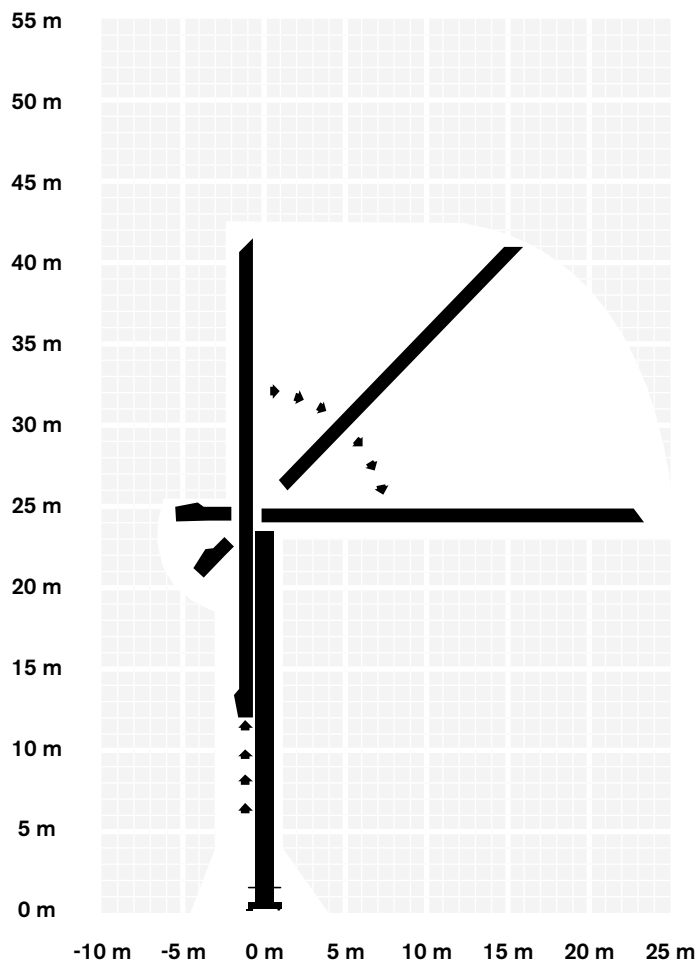
FC 6.24H

Antriebe · Mécanismes · Mecanismos · Meccanismi

		m/min	kg	kW
Hoisting · Heben · Levage · Elevaciòn · Sollevamento		4,5	1500	2,2
		18	1500	4,4
		36	900	5,9
Trolleying · Katzfahren · Distribution · Distribuciòn · Distribuzione		0 → 12 → 32		1,1
Slewing · Schwenken · Orientation · Orientaciòn · Rotazione		0 → 0,3 → 0,9 tr/min - U/min - rpm		11 Nm
Erection · Montage · Montage · Montaje · Montaggio				1,5
Power requirements · Anschlußwert · Puissance électrique nécessaire · Potencia electrica necesaria · Potenza elettrica necessaria				14 kVA
Main supply · Netzstrom · Réseau · Alimentaciòn · Rete elettrica				400 V - 50 Hz
Weight of crane without ballast · Konstruktionsgewicht ohne Ballast · Poids de la grue sans lest · Pesa de la grua sin lastre · Peso gru senza zavorra				5000 kg

In a small place · In wenigem Platz · En espace réduit · En poco espacio · In poco spazio

In a short time · In weniger Zeit · En temps réduit · En poco tiempo · In poco tempo



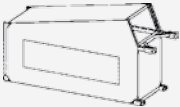
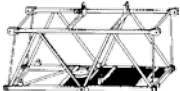







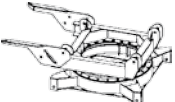
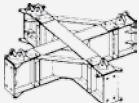


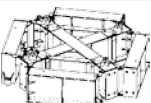
WORKS FOR YOU.™

TRANSPORTATION

FC 6.24H

Transport · Transport · Conducción · Trasporto

Packing list

FC 6.24H	LENGTH · LÄNGE · LONGUEUR · LONGITUD · LUNGHEZZA	WIDTH · BREITE · LARGEUR · ANCHURA · LARGHEZZA	HEIGHT · HÖHE · HAUTEUR · ALTURA · ALTEZZA	QUANTITY · MENGE · QUANTITÉ · CANTIDAD · QUANTITÀ	WEIGHT · GEWICHT · POIDS · PESO · PESO
	2,45 m	0,75 m	1,22 m	1	310 kg
	2,50 m	1,02 m	0,85 m	1	310 kg 200 kg
	2,82 m	0,76 m	0,90 m	1	250 kg
	3,11 m	0,75 m	0,90 m	2	150 kg
	3,10 m	0,75 m	0,90 m	5	110 kg
	4,25 m	0,75 m	0,86 m	1	100 kg
	1,92 m	0,89 m	0,80 m	1	260 kg
	1,92 m	0,89 m	0,80 m	6-21	175 kg
	0,97 m	0,89 m	0,80 m	1	110 kg
	1,10 m	1,05 m	0,50 m	1	400 kg
	1,35 m	1,35 m	0,50 m	1	350 kg
	1,00 m	0,41 m	0,25 m	4	90 kg
	0,23 m	0,16 m	0,42 m	4	22 kg
	2,00 m	2,00 m	0,50 m	1	710 kg