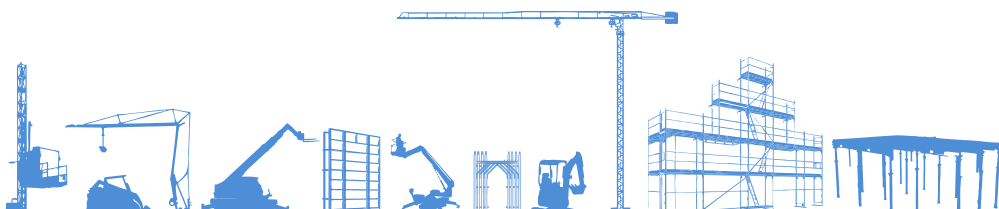


# SCHEDA TECNICA



**NOLEGGIO**  
[www.gruppoemac.it](http://www.gruppoemac.it)

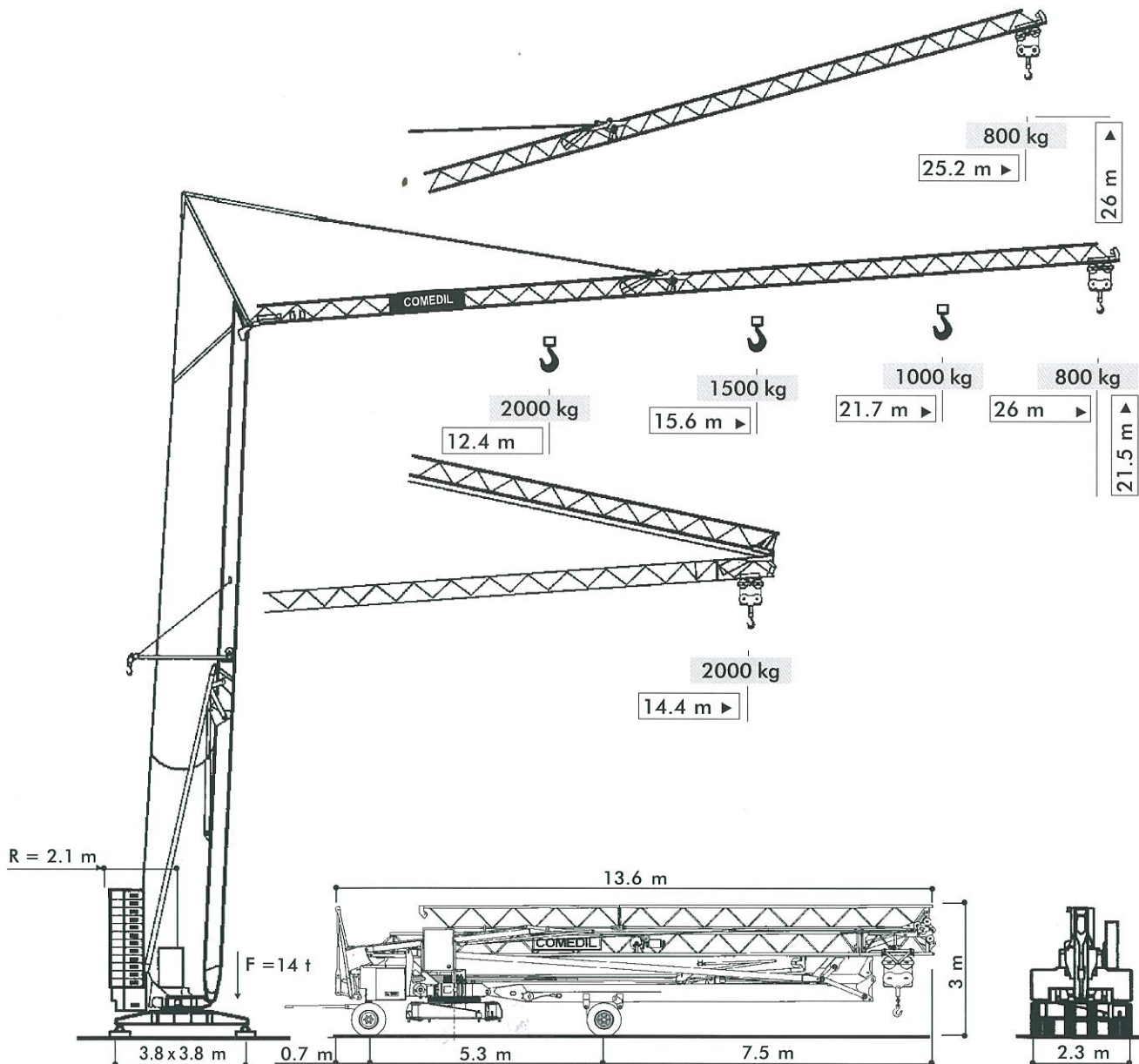


**INSIEME PER DARVI IL MEGLIO**

Non chiedere una macchina,  
scegli un servizio che ti dia valore.

[www.gruppoemac.it](http://www.gruppoemac.it)

**Gru a montaggio rapido**  
**Self-erecting Crane • Grue à montage rapide**  
**Schnellmontagekran • Grúa de montaje rapido**



# CBR 26H-2

**THE ULTIMATE CRANE™**

Dati illustrativi non impegnativi  
 Con riserva di modifica senza preavviso

Angaben und Beschreibung unverbindlich  
 Änderungen vorbehalten ohne weitere Mitteilung

Specifications and data not binding  
 Subject to modification without notice

Dibujos y datos sin compromiso  
 Modificaciones reservadas sin preaviso

Données techniques seulement indicatives  
 Modifications réservées sans préavis

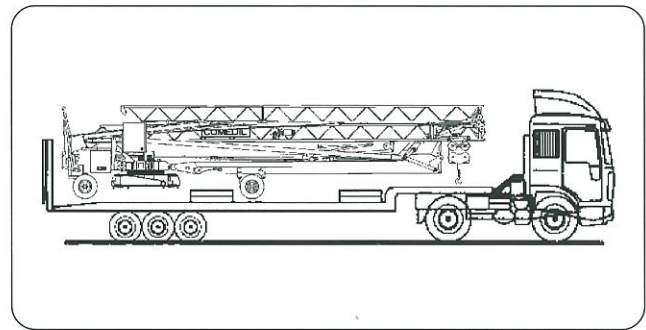
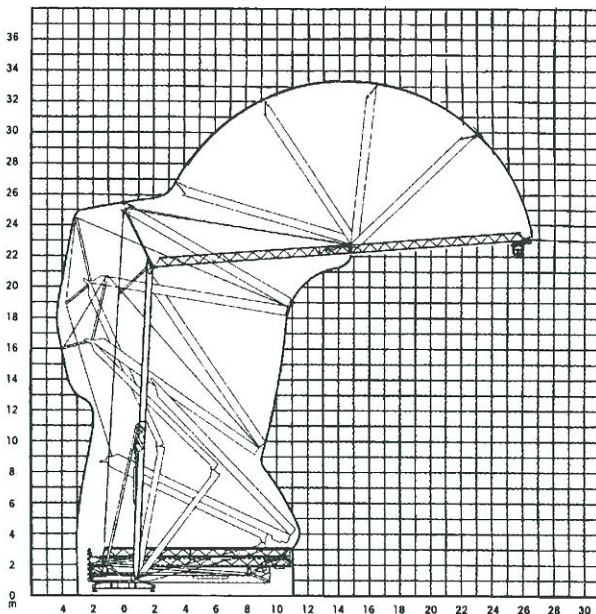
UTEDOC.REV.002 01\_2003



# CBR 26H-2

- montaggio oleodinamico integrale
- full hydraulic erection
- vollhydraulische Montage
- montage hydraulique intègral
- montaje hidraulico integral
- zincatura a caldo torre e braccio
- galvanized tower and jib
- Ausleger und Turm feuerverzinkt
- flèche et mât galvanisés
- torre y pluma cincadas en caliente
- trasportabile con zavorra di montaggio
- trailerable with erection ballast
- verfahrbar mit Montage-Ballast
- transportable avec lest de montage
- transportable con lastre de montaje

CBR 26H-2		m/min	kg	kW
Sollevamento Hoisting Heben Lavage Elevaciòn		6	2000	1.8
		18	2000	5.5
		36	1000	5.8
Distribuzione Katzfahren Distribution Distribuciòn		12/32		2.2
Rotazione Orientation Orientaciòn (Inverter)		0.2 - 0.9 tr/min - U/min - rpm		3 da Nm
Montaggio Erection Montage Montage Montaje				2.2 kVA
Potenza elettrica necessaria Power Requirements Anschlusswert Puissance électrique nécessaire Potencia electrica necesaria				15 kVA
Rete elettrica Mains Supply Netzstrom Réseau Alimentacion			400 V - 50 Hz	
Zavorra Ballast Ballast Lest Lastre			13350 kg	
Peso gru Crane weight Konstruktiõnsgewicht Poids de la grue Peso della grua			8200 kg	



98/37CE - 2000/14/CE - 89/336 CEE  
DIN 15018 H1-B3  
DIN 15019/15020/4114

## Gru Comedil s.r.l.

A Terex Company

Via S. Egidio 42/A, 33074 Fontanafredda (PN) - Italy  
Tel. (+39) 0434 567 311 - Telefax (+39) 0434 998631

Internet e-mail: info@comedil.com  
Internet home page: www.comedil.com

## Divisione Automontanti

Via Alessandrina, 25 - 20095 Cusano Milanino (MI) - Italy  
Tel. (+39) 02 613 16011 - Telefax (+39) 02 613 16034

Internet e-mail: info.CBR@comedil.com

