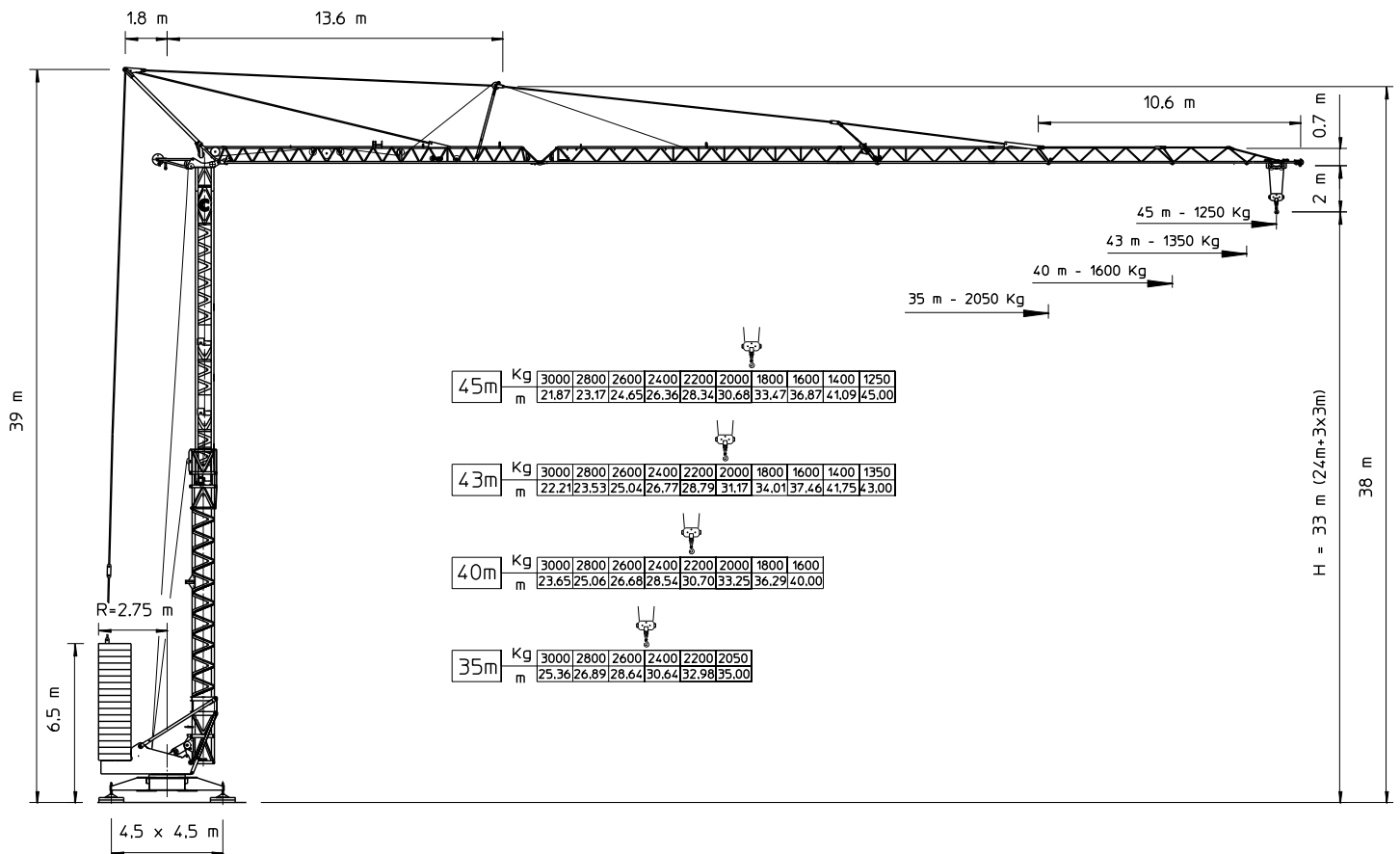
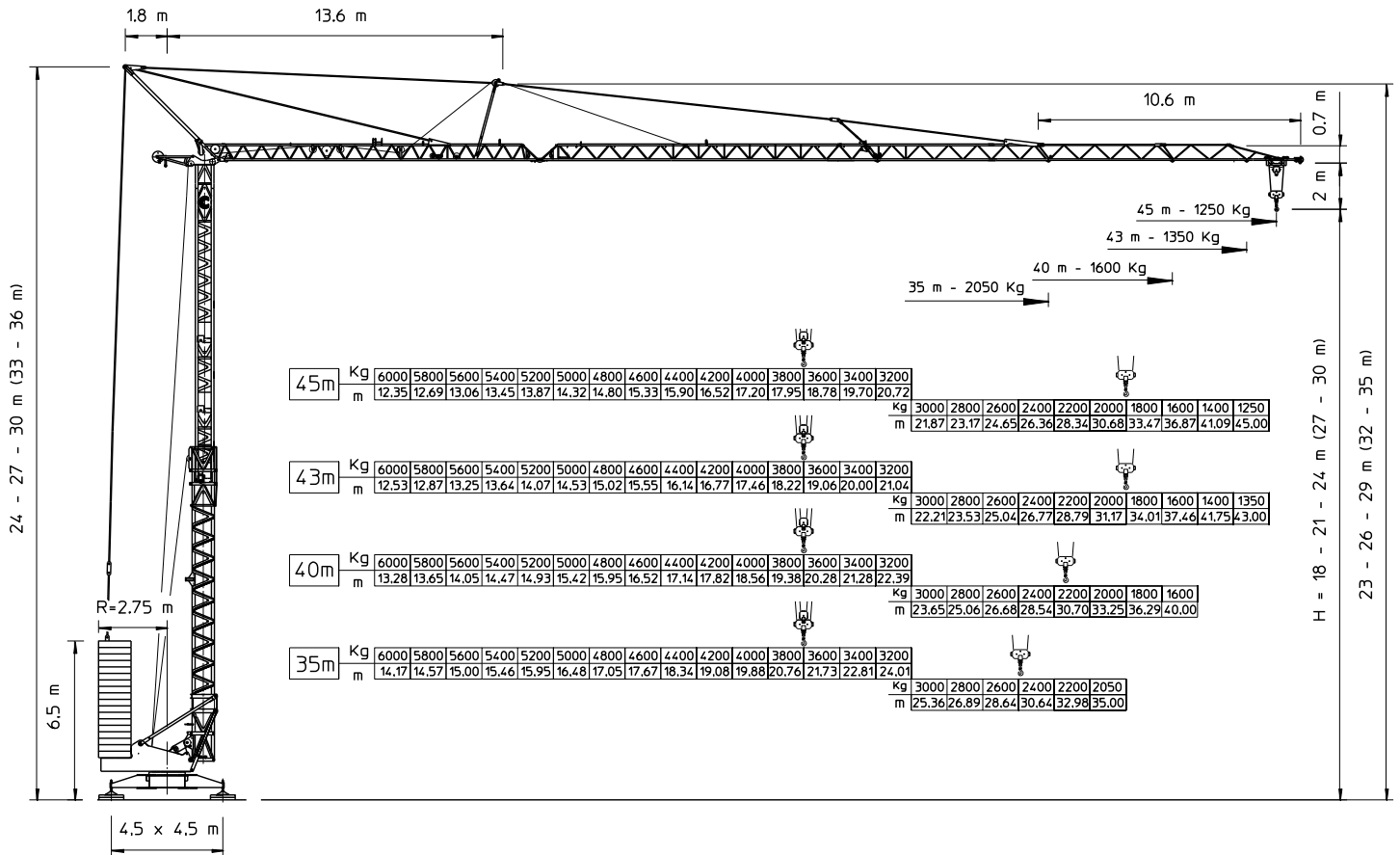

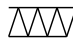
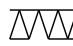
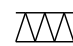
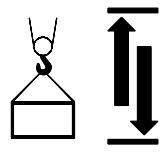
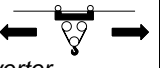




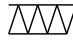
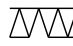

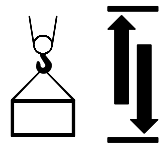
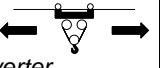

Conducta Eurokran 4513/33



Conducta Eurokran 4513/33

Sbraccio - Ausladung Luffing - Flechè	Portata - Tragkraft - Load - Charges							
	Kg		6000	3000	2050	1600	1350	1250
 35,0 m	m		14,17	25,36	35,0			
 40,0 m	m		13,28	23,65		40,0		
 43,0 m	m		12,53	22,21			43,0	
 45,0 m	m		12,35	21,87				45,0
 18,5 Kw Inverter		>			5 m/min			3000 kg
		>>			17 m/min			3000 kg
		>>>			25 m/min			3000 kg
		>>>>			37 m/min			1900 kg
		>>>>>			70 m/min			400 kg
 4 Kw Inverter		>			2,5 m/min			6000 kg
		>>			8,5 m/min			6000 kg
		>>>			12,5 m/min			6000 kg
		>>>>			18,5 m/min			3800 kg
		>>>>>			35 m/min			800 kg
 6 Kgm Inverter		>			15 m/min			6000 kg
		>>			30 m/min			4000 kg
		>>>			60 m/min			1600 kg
		0,2 / 0,4 / 0,6 / 0,8 1/min						

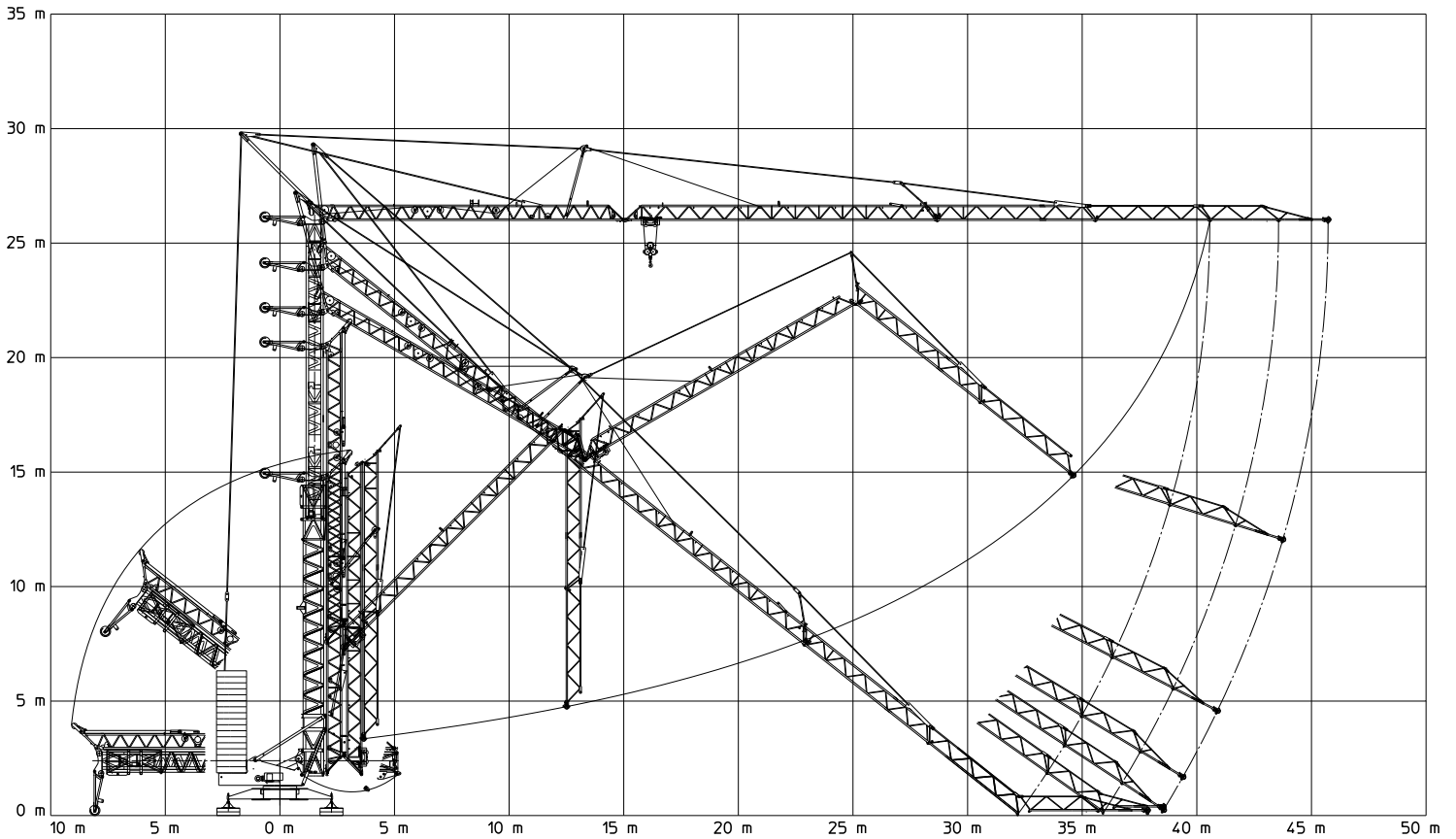
Hakenhöhe hauteur s/crochet altezza al gancio height of hook	18,0 m 21,0 m 24,0 m (27-30 m)
Gegenballast contre poids zavorra contrappeso counterweight	H (m) t 18 > 27 32,81 30 34,74
Drehradius rayon de giration arrière raggio di rotazione rotating radius	2,75 m
Konstruktionsgewicht poids de la grue peso della gru structural weight	19.7 t
Abstützung ecartement scartamento gauge (track)	4,5 x 4,5 m
Eckdruck pression d'angle pressione su uno stabilizzatore corner pressure	34 t
Gesamt-Motorenleistung puissance totale des moteurs forza motrice totale total motor output	25 kW 400 V - 50Hz
Kabelquerschnitt section du cable sezione del cavo sottogomma cable section	4x16 mm ²

Sbraccio - Ausladung Luffing - Flechè	Portata - Tragkraft - Load - Charges							
	Kg			3000	2050	1600	1350	1250
 35,0 m	m			25,36	35,0			
 40,0 m	m			23,65		40,0		
 43,0 m	m			22,21			43,0	
 45,0 m	m			21,87				45,0
 18,5 Kw Inverter		>			5 m/min			3000 kg
		>>			17 m/min			3000 kg
		>>>			25 m/min			3000 kg
		>>>>			37 m/min			1900 kg
		>>>>>			70 m/min			400 kg
 4 Kw Inverter		>			15 m/min			6000 kg
		>>			30 m/min			4000 kg
		>>>			60 m/min			1600 kg
 6 Kgm Inverter			0,2 / 0,4 / 0,6 / 0,8 1/min					

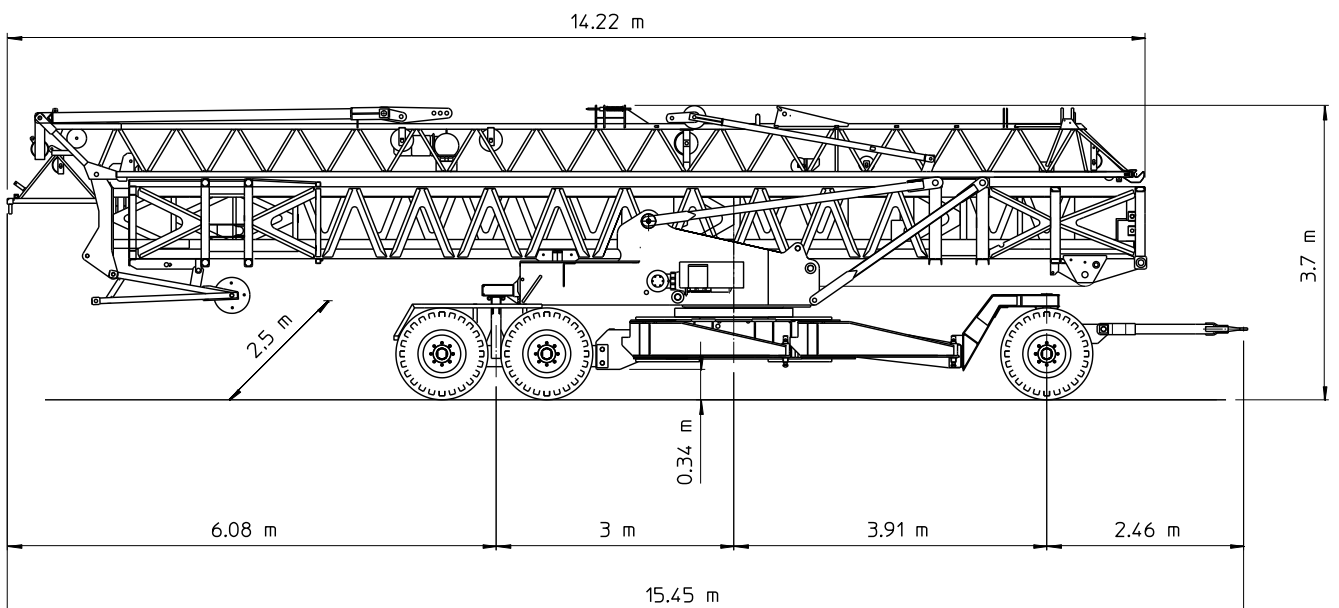
Hakenhöhe hauteur s/crochet altezza al gancio height of hook	33 m
Gegenballast contre poids zavorra contrappeso counterweight	34,74 t
Drehradius rayon de giration arrière raggio di rotazione rotating radius	2,75 m
Konstruktionsgewicht poids de la grue peso della gru structural weight	19.7 t
Abstützung ecartement scartamento gauge (track)	4,5 x 4,5 m
Eckdruck pression d'angle pressione su uno stabilizzatore corner pressure	34 t
Gesamt-Motorenleistung puissance totale des moteurs forza motrice totale total motor output	25 kW 400 V - 50Hz
Kabelquerschnitt section du cable sezione del cavo sottogomma cable section	4x16 mm ²

Conducta Eurokran 4513/33

Montage-Montage-Montaggio-Erection



Transport-Transport-Trasporto-Transport



Conducta I-36015 Schio (VI)
Telefono 0445 57 62 29
Telefax 0445 57 53 20
Mail info@conducta.it

Scheda E 451333_01_18

Konstruktionsänderungen vorbehalten !
Sous réserves de modifications !
Si riservano modifiche !
Subject to alterations !